



PANDUAN PENGGUNA  
SYSTEM REQUIREMENT FOR SUPPLIER SELF SERVICE  
(SUS) PORTAL & REGISTRATION OF SUPPLIERS (ROS)

---

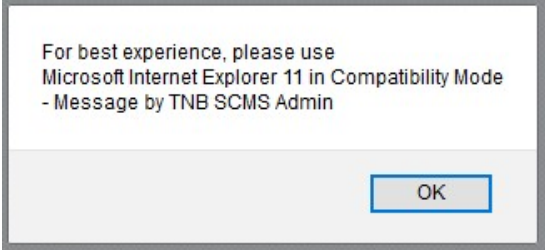
SUPPLIER RELATIONSHIP MANAGEMENT  
SUPPLY CHAIN MANAGEMENT SYSTEM (SCMS)

DISEDIAKAN OLEH:

SUPPLY CHAIN MANAGEMENT (SCM)  
BAHAGIAN ICT

The minimum system requirement to access Supplier Self Service (SUS) portal and Registration of Suppliers (ROS) as below.

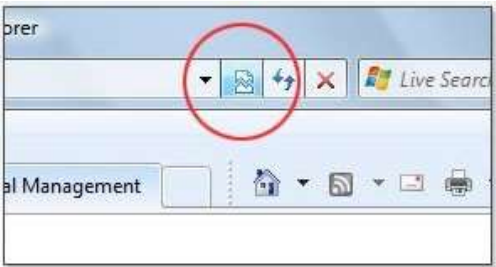
1. **JAVA RUNTIME ENVIRONMENT (JRE)** Minimum version 1.6
2. **WEB BROWSER – Internet Explorer**
  - i. Minimum version supported is Microsoft Internet Explorer 11 with Compatibility Mode.
  - ii. Lower versions than Microsoft Internet Explorer 11 or other browsers will be shown the following message.



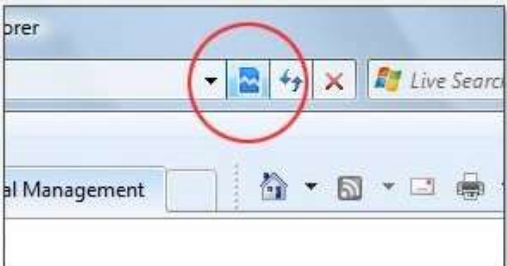
- iii. Google Chrome browser is not currently supported
3. **PDF READER** – Adobe Reader or similar
4. **FIREWALL** – Ensure internal company firewall has been set to enable SUS portal web address <https://srm.tnb.com.my/portal>
5. **SET COMPATIBILITY VIEW IN INTERNET EXPLORER**

**Method 1: Compatibility View button on the Address bar**

1. Click the **Compatibility View button** on the Address bar

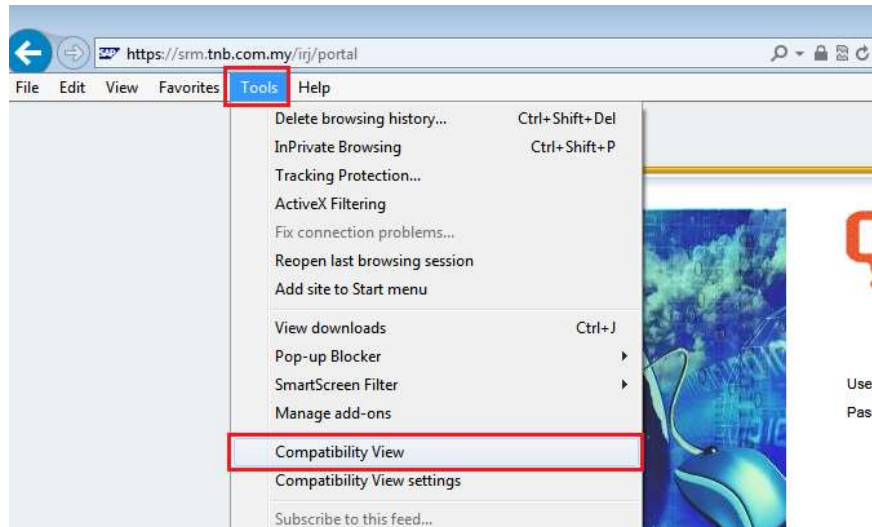


2. The button changes from an outline to a solid color when you view the page.

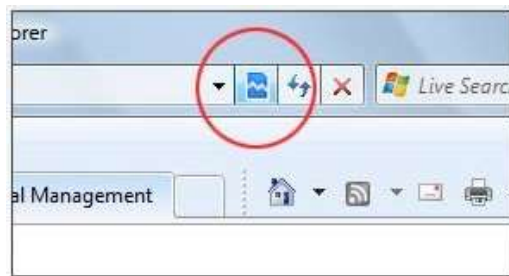


## Method 2: Use Compatibility View on the Menu bar

1. Open the webpage in Internet Explorer, and then click **Compatibility View** in the **Tools** menu.

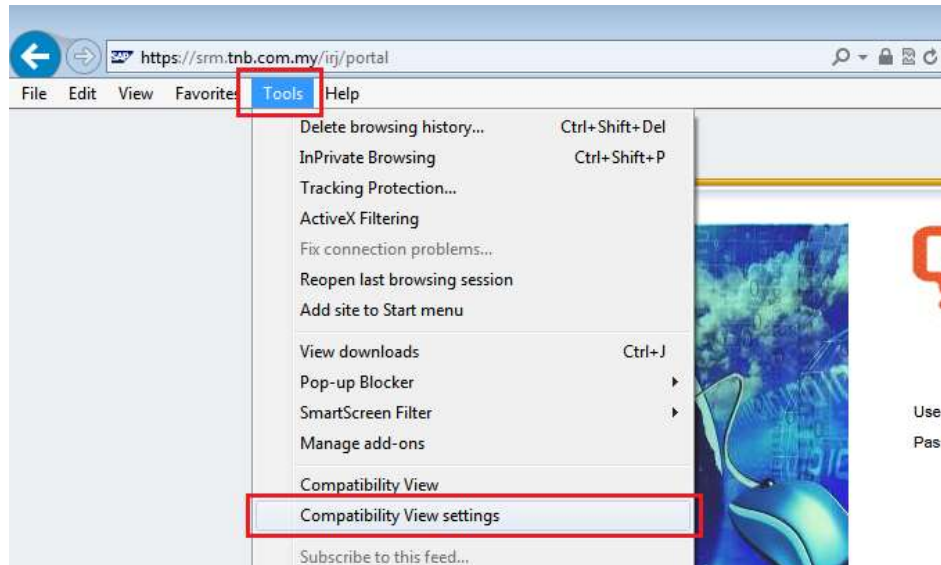


2. When Compatibility View is turned on, the button changes from an outline to a solid color when you view the page.



### Method 3: Set Compatibility View on the Menu bar

1. In Internet Explorer, click **Compatibility View settings** on the **Tools** menu.



2. In the **Compatibility View Settings** windows, type the address of the *webpage*: **tnb.com.my** and then click **Add**.

