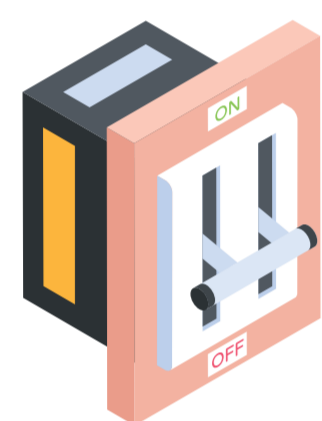


PRIORITISE SAFETY DURING FLOODS

Stay alert during the flood season by practising electrical safety measures for the well-being of yourself and your loved ones.



DURING FLOOD



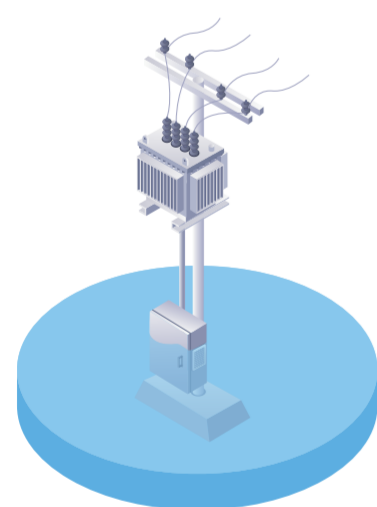
Refrain from using any electrical appliances and ensure that the main switch has been switched off to avoid getting electrocuted.



If water level rises, contact TNB CareLine at 15454 or Facebook TNB Careline in order to disconnect the electricity supply immediately.



Do not touch any electrical appliances or electric cables submerged in the flood water even though they are coated with insulation.



Stay away from any steel poles or TNB installations submerged in water to avoid the risk of getting electrocuted.



Ensure all socket outlets are switched off and remove all electrical appliances' power plugs.



Should your premises be installed with solar PV, switch off the system in order to avoid the electricity supply from being absorbed back into your house wiring system.



Switch off the main switch before evacuation.

AFTER A FLOOD



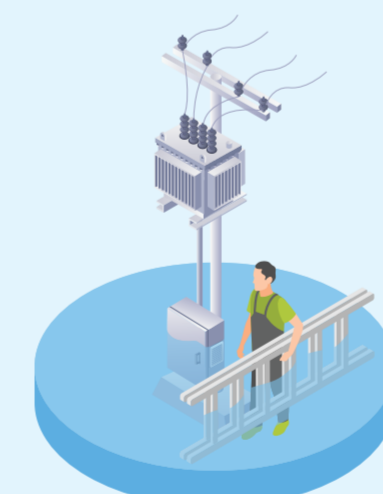
Switch off the main switch before cleaning any electrical appliances or wiring.



Ensure all electrical switches and appliances submerged by the flood are inspected and tested by an electrical contractor who is registered with the Energy Commission before reusing them.



Stay away from tree branches that are close to any electrical wiring as they may still have electricity current flowing through. Contact TNB for immediate actions.



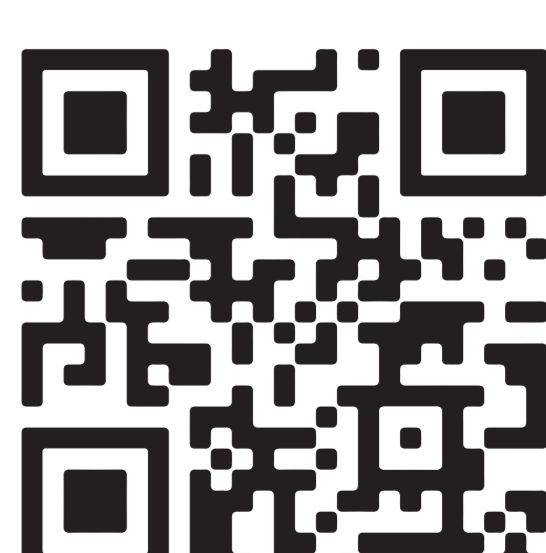
Do not use any steel/ aluminium ladders or poles close to electrical wiring.



Parents are advised to keep an eye on their children and do not allow them to approach any fallen electric poles or disconnected wires.

Contact us should there be any concerns or issues with the electricity installation which has been effected by the flood.

 TNB Careline: 15454  TNB CareLine



Scan the QR code to download the flood safety guide.